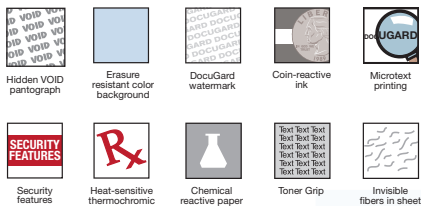


A Medical Security Papers



TAMPER-RESISTANT SECURITY FEATURES



C



A Medical Security Papers Reduce fraud and protect personal information by exceeding the tamper-resistance guidelines set by the Centers for Medicare and Medicaid Services (CMS). Three levels of security are available: Standard, Advanced and Premier.

ID No.	Size	Color	Sheet Qty.	Unit	Price
Premier Medical Paper —10 security features. Premier features: all Standard and Advanced features plus chemical reactive paper, toner grip and embedded invisible fibers.					
1	PRB-04543	8½ × 11	Blue	500	RM 41.90
Advanced Medical Paper —7 security features. Advanced features: all Standard features plus heat-sensitive ink.					
2	PRB-04545	8½ × 11	Blue	500	RM 31.93
Standard Medical Paper —6 security features. Standard features: "VOID" Pantograph, erasure-resistant background, watermark, coin reactive ink, microtext print and security features listing.					
3	PRB-04541	8½ × 11	Blue	500	RM 28.39
4	PRB-04544 *	8½ × 11	Blue; Canary	500	RM 42.52
5	PRB-04542	8½ × 11	Green	500	RM 28.89

* PRB-04544—Contains 250 2-part sets.

B DocuGard® Standard Security Business Checks Incorporates security features recommended by the National Check Fraud Center. Compatible with most money management software programs. Security features include: Check-21 compliance, VOID pantograph behind endorsement, security warning, VOID when copied, anti-splice backer, security features listing box, watermarks, check verification number, coin reaction, patterned background and microtext print.

ID No.	Size	Color	Sheet Qty.	Unit	Price
Standard Top Check					
6	PRB-04501 *	8½ × 11	Blue Marble	500	RM 32.90
Standard Middle Check					
7	PRB-04509 *	8½ × 11	Blue Marble	500	RM 32.90
Standard Bottom Check					
8	PRB-04517 *	8½ × 11	Blue Marble	500	RM 32.90
Premier Three Checks per Page —Also features heat-sensitive ink, and a two-tone, erasure-resistant background.					
9	PRB-04539 *	8½ × 11	Blue/Green Prismatic	500	RM 36.28

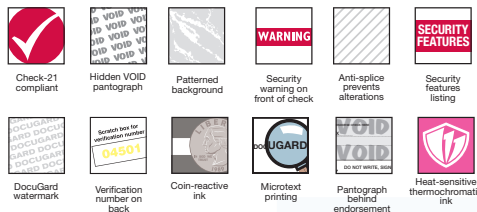
* CPSA Compliant. 24 lb.

B Security Business Checks



Item #04501
3½" & 7" perfs from top

TAMPER-RESISTANT SECURITY FEATURES



D



C Amerigo® Wide-Format Inkjet Paper Wide-format CAD, engineering and GIS media paper. Compatible with most wide-format engineering/inkjet plotters and printers. Dust-free surface.

ID No.	Roll Size	Weight	Rolls/Unit	Unit	Price
Check-24 —99 US brightness rating. 2" core. Coated for a smooth finish and quality imaging.					
10	PMC-45151	24" × 150 ft	24 lb	1	RL 35.14
11	PMC-45181	24" × 150 ft	26 lb	1	RL 56.70
12	PMC-45152	36" × 150 ft	24 lb	1	RL 52.67
13	PMC-46300	36" × 300 ft	24 lb	1	RL 141.19
Copy-20 —92 US brightness rating. Uncoated bond paper with a smooth finish. Perfect for low cost printing and copying. 3" core.					
14	PMC-09118*	18" × 500 ft	20 lb	2	CT 70.13
15	PMC-09124	24" × 500 ft	20 lb	2	CT 84.35
16	PMC-09130	30" × 500 ft	20 lb	2	CT 106.60
17	PMC-09136	36" × 500 ft	20 lb	2	CT 107.23
Display-35 & 48 —95 US brightness rating. Coated. Water-, scratch- and smudge-resistant. Thicker sheet handles more ink coverage for best results.					
18	PMC-46124	24" × 100 ft	48 lb	1	RL 98.35
19	PMC-45202*	36" × 100 ft	35 lb	1	RL 91.58
20	PMC-46142	42" × 100 ft	35 lb	1	RL 144.20
Plan-24 —95 US brightness rating. Coated. Water-, scratch- and smudge-resistant. Accepts pen and pencil marks. Ideal for daily work and presentations where a low cost-highest quality combination is desired.					
21	PMC-45161	24" × 150 ft	24 lb	1	RL 62.88
22	PMC-45162	36" × 150 ft	24 lb	1	RL 85.44
23	PMC-45142	42" × 150 ft	24 lb	1	RL 117.18

D Amerigo® Inkjet Bond Paper Roll Designed for a variety of applications and compatible with both pigment and dye-based inks. Produces vivid colors and bold blacks with excellent holdout and print contrast. Fast drying for easy handling. Includes one roll.

ID No.	Roll Size	Weight	Rolls/Unit	Unit	Price
24	PMC-44124	24" × 150 ft	20 lb	1	RL 17.30
25	PMC-44136	36" × 150 ft	20 lb	1	RL 23.59
26	PMC-44142	42" × 150 ft	20 lb	1	RL 23.60

Prices subject to change without notice. Visit our website for the latest pricing and product information.